



COMMUNITY HEALTH PLAN
of Washington™

The power of community

Resilient Communities, Resilient Systems: Addressing Immigrant and Refugee Health in Challenging Times

Kush Doshi, MHA, MPA, LMT, CMLDT

Connie Mom-Chhing, DM, MPA

Kate Jasonowicz, LICSW

AGENDA



COMMUNITY HEALTH PLAN
of Washington™

The power of community

- **Community Health Plan of Washington:** Commitment to Community
- **Understanding the Landscape of Immigrant and Refugee Health**
- **Policies with Real Consequences:** Impacts on Families and Communities
- **What's Working:** Models, Partnerships, and Promising Practices
- **Building Toward a Better Tomorrow...**

Acknowledge all here to learn and want to create safety to share your opinions and thoughts

**Please note: CHPW does not provide legal advice on immigrant and refugee topics.*

Acknowledgement

- Our immigrant and refugee communities are facing challenges unlike we have ever seen. Changes in federal policy such as stripping immigrants and refugees of legal status, tightening public benefits usage policy so that immigrants and refugees are no longer able to access public benefits, and increases in immigration enforcement have resulted in fear, anxiety, stress, and a high level of disengagement in public services, including health care. Now more than ever, service providers across the spectrum must be adaptive, innovative, and collaborative in addressing immigrant and refugee community needs. Community Health Plan of Washington(CHPW) will share innovative and collaborative efforts in the immigrant and refugee space including how coalition building is used as a model to advance necessary and critical work, and how service providers will need to adapt and change to meet immediate community needs.



Introductions



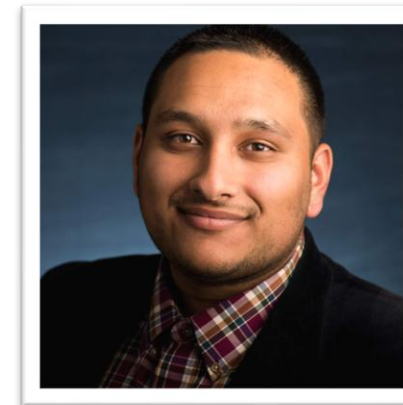
**Kate Jasonowicz,
LICSW**

*Senior Regional Manager,
Regional Systems
Integration*



**Connie Mom-Chhing,
DM, MPA**

*Senior Director, Regional
Systems Integration*



**Kush Doshi, MHA,
MPA, LMT, CMLDT**

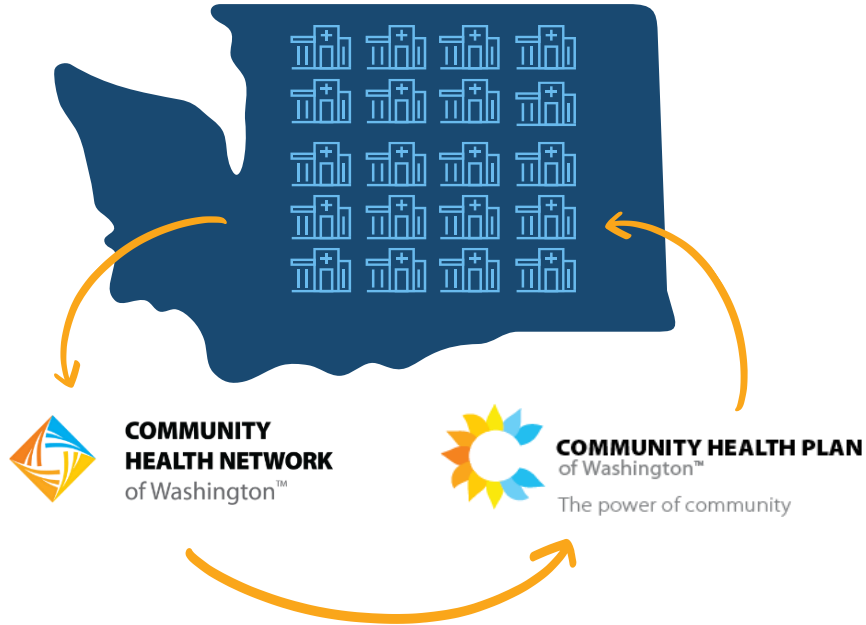
*Program Manager, Immigrant
and Refugee Health*



**COMMUNITY HEALTH PLAN
of Washington™**

The power of community

Our Founding & Governance Structure Provide Unique Connection to Community



- Only not-for-profit Medicaid plan serving Washingtonians. Founded and governed by Community Health Centers (CHCs) more than 30 years ago.
- Our Washington-only focus allows us to respond quickly, with local staff who provide care and resources in the communities we call home.
- We work closely with our members listening to their needs, removing barriers, and ensuring they receive the quality care they deserve.
- Our integration with CHCs allows us to work together to increase access to care, focus on whole-person health, and improve health outcomes for Washingtonians.



Apple Health

300,000 Members*

Including Behavioral Health Services
Only Members



Individual & Family Cascade Select

37,000 Members*



Medicare Advantage/D-SNP

9,000 Members*

*Snapshot data as of 05/2026

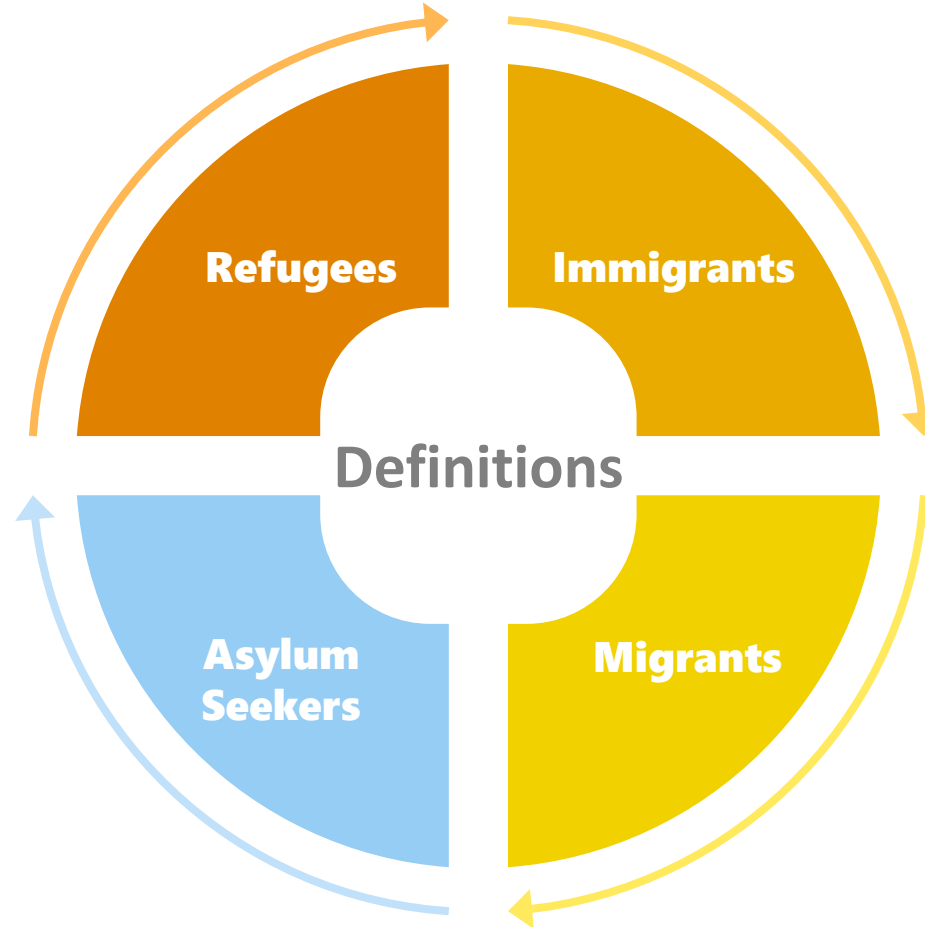


COMMUNITY HEALTH PLAN
of Washington™

The power of community

Understanding the Landscape of Immigrant and Refugee Health

Someone who has been forced to flee his or her home because war, violence, or persecution, often without warning. Refugees have the opportunity to become lawfully permanent residents and eventually citizens.



Someone who makes the conscious decision to leave his or her home and move to a foreign country with the intention of settling there. Many become lawful permanent residents and eventually citizens.

Someone who is seeking international protection from dangers in his or her home country, but whose claim for refugee status hasn't been granted legally. Asylum seekers must apply for protection in the country of destination and would need to arrive at or cross a border in order to apply.

Someone who is moving from place to place (within a country or across borders) usually for economic reasons such as seasonal work. Migrants are generally seeking better opportunities.



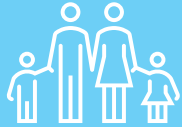
Individual Immigrants and Refugees

Community Based Organizations

Health Care Providers

Managed Care Organizations

Governmental Bodies and Entities



Individual immigrant and refugee lives are at the core of the work we do.

Community Based Organizations, often non-profit organizations, that are dedicated to advancing the health and wellness of immigrant and refugee lives in Washington State.

Our health care providers including hospital systems, public health systems, community health centers, etc. are providing direct health care services to our immigrant and refugee populations across Washington State.

Managed Care Organization provide health coverage for immigrants and refugees largely on Apple Health, Apple Health Expansion, and Cascade Care.

Governmental entities include: Health Care Authority, Health Benefit Exchange, Department of Health, Department of Social and Health Services, and local entities such as Commissioners.

Direct Service Providers



Regulators



COMMUNITY HEALTH PLAN
of Washington™

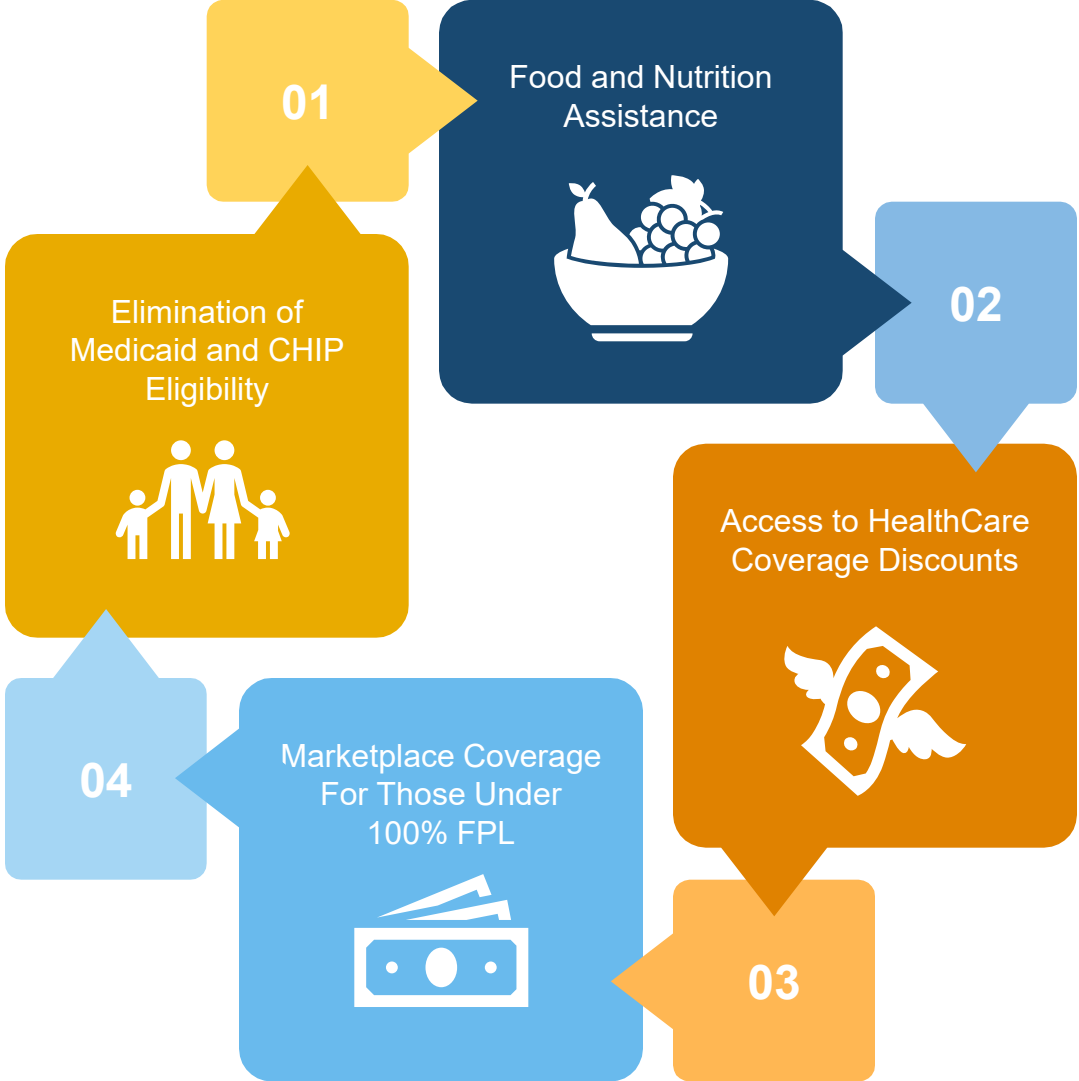
The power of community

Policies with Real Consequences: Impacts on Families and Communities

The Story of Carmen...



Benefits Changes Affecting Immigrants and Refugees



Congressional HR 1/OBBBA Immigrant Health Timeline

November
2025

ALL lawfully present immigrants <100% FPL lose federal premium assistance for 2026

NOTE: All Washingtonians to 250% FPL still eligible for state Cascade Care Savings

October 2026

Federal Medicaid and CHIP eligibility ends for Asylees, Refugees, and many other lawfully present immigrants

CCS
APTC

WA will continue to cover kids and pregnancy related AH regardless of status

January 2027

Federal assistance for health premiums ends for Asylees, Refugees, and many other lawfully present immigrants

Medicare ends for Asylees, Refugees, and many other lawfully present immigrants

NOTE: Naturalized Citizens, Lawful Permanent Residents (Green Card Holders), COFA migrants, and Cuban/Haitian Entrants retain access

Refugee Resettlement

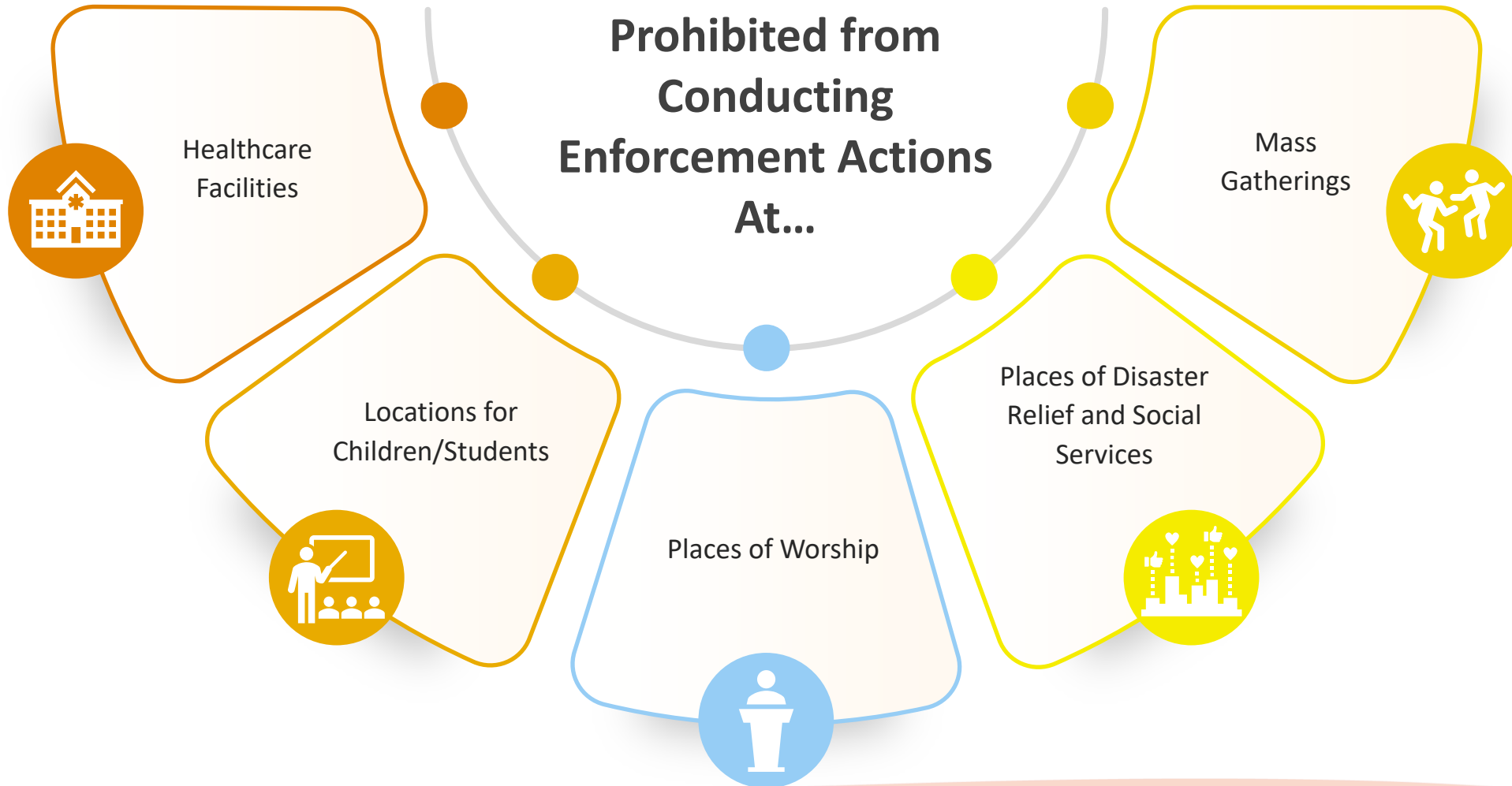


U.S Refugee Admissions Program
Suspended Indefinitely

Termination of Parole Programs



The Protected Areas Policy...





The Ethical Dilemma



High Quality Care

Your professional and ethical responsibility is to provide high quality of care regardless of immigration/refugee status.



SDOHs

Identifying immigration/refugee status as an SDOH can assist in providing comprehensive care.



Referrals

Knowing someone's immigration/refugee status could help in proper referrals to programs that are suited for the patient.



Discrimination

Health records can be seen by clinicians that do have anti-immigration/refugee beliefs or implicit bias leading to discrimination.



ICE/CBP Risk

There is an increased risk of reporting to agencies such as ICE/CBP resulting in detention and deportation.



Health Record

Information can be difficult to remove from health records once inputted and we don't know future of health care privacy.

Tangible Ways to Support Immigrant and Refugee Patients and Families

1



Change the way you screen questions if you believe it will help in providing patient care. For example instead of asking if a patient is undocumented you may ask “have any of your family members left suddenly or at risk of leaving suddenly?”

2



Explicit documentation of immigration status is more likely not required for referrals or in providing care. Referrals and discussions can be phrased alternatively without explicitly writing “undocumented” such as “ineligible for insurance” or “immigration/refugee stressors”.

3



Patient autonomy can be honored by recording immigration/refugee status utilizing informed consent. This should be as a last resort and only if absolutely necessary.



Rule of Thumb

Documentation of immigration/refugee status of patients and their family members in a health record should be **avoided** especially in the times that we are in where the **risks significantly outweigh the benefits**. If immigration/refugee status is necessary for a patient's receipt of services or resources, **conversations with clinicians should be utilized first and written communications avoided or utilize indirect language in the health record to describe social context.**

Assure patients of confidentiality, informed consent, and privacy laws.

WA State Critical Policies and Budget Asks

Fully Fund Apple Health Expansion



Budget ask to cover all eligible low-income immigrants and refugee not eligible for Medicaid.

The State's only Deportation Defense Hotline that addresses ICE/CBP activity and provides resources. Connects to local rapid response teams.



Funding for the Deportation Defense Hotline

Continued Funding for Washington Migrant and Asylum-Seeker Support Program



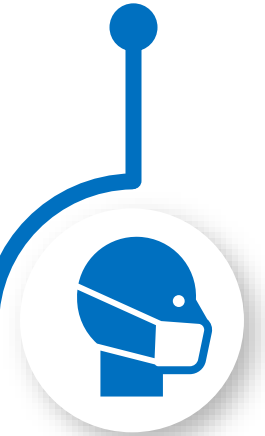
Funding for vital support services and allow flexibility in responding to emerging needs that communities facing.

Requires employers to notify employees when U.S. Immigration and Customs Enforcement plans to conduct inspections or audits in the workplace.



Immigrant Workers Protection Act

Banning All Law Enforcement from Wearing Masks



Ban all law enforcement including state, local, and federal law enforcement, from wearing masks and requiring them to have identification while conducting operations in the state.

WA State Critical Policies and Budget Asks

Driver Privacy Act



Create needed regulations for the use of Automated License Plate Reader surveillance technology by state and local agencies.

Clarify the Washington Attorney General's Office investigative authority to uphold state laws such as Keep Washington Working.



Attorney General Civil Investigative Demands

Removal of Word "Alien" from Legislative Language



Removal of the word "alien" from codified language.

Requires/allows ability to sue ICE/CBP and require presence in court.



Bill with Ability to Sue ICE/CBP Where Required To Show Up to Court

Secure and Accountable Federal Enforcement (SAFE) Act



Expand and codify policies developed by state attorney general putting additional protections around previously considered safe places with federal immigration. Includes protections for those utilizing services within facilities.



COMMUNITY HEALTH PLAN
of Washington™

The power of community

What's Working: Models, Partnerships, and Promising Practices

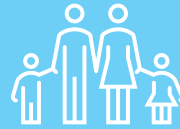
Discussion Questions!

With all the federal changes since January 2025:

- What are some of the opportunities or strengths you have seen in the immigrant and refugee communities you all work with?
- What are some of the challenges seen in the immigrant and refugee communities you all work with?
- What are some new creative ways/partnerships you have utilized to support immigrant and refugee communities?



**Individual
Immigrants and
Refugees**



Individual immigrant and refugee lives are at the core of the work we do.



**Community
Based
Organizations**



Community Based Organizations, often non-profit organizations, that are dedicated to advancing the health and wellness of immigrant and refugee lives in Washington State.



**Health Care
Providers**



Our health care providers including hospital systems, public health systems, community health centers, etc. are providing direct health care services to our immigrant and refugee populations across Washington State.



Workforce, Culture, and Internal Capacity

Strategy

01



Dedicated Staff and Pipeline

Staff focused on immigrant and refugee work and pipeline through partnership with UW for students.

Strategy

02



Cultural Responsiveness Training

Various trainings available for all CHPW staff.

Strategy

03



Organizational Workforce Infrastructure

Supporting employees with lived experiences: Immigrant and Refugee Health Workgroup and Employee Resource Groups.

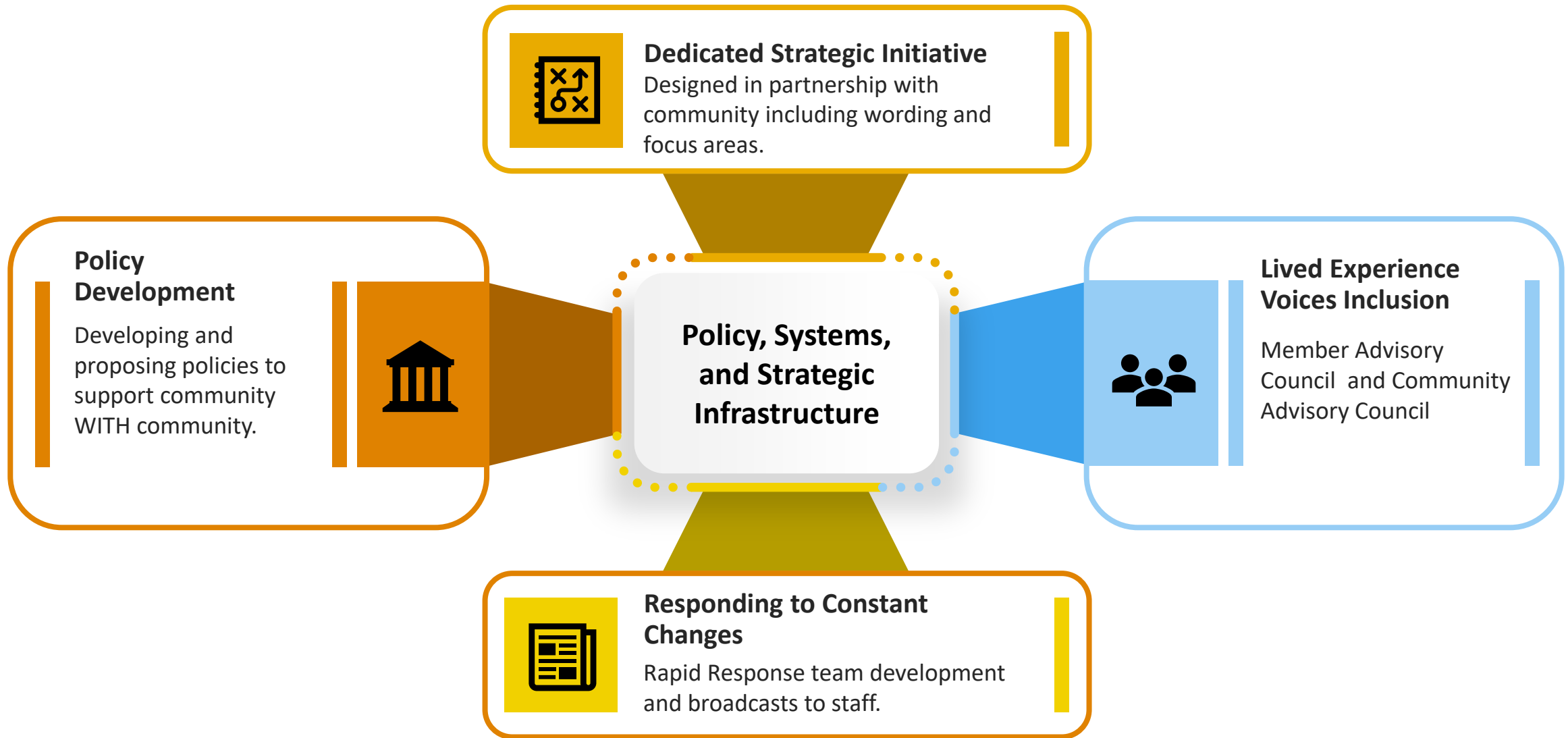
Strategy

04

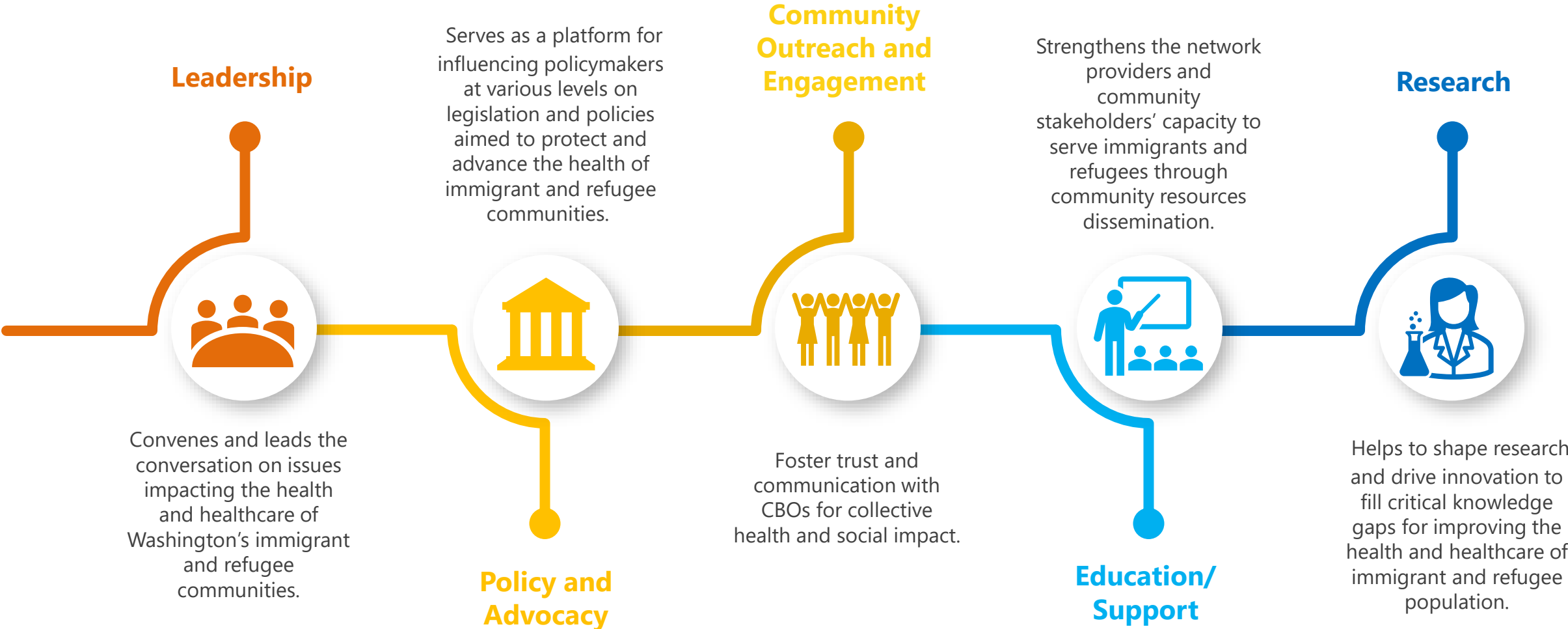


Recruitment Strategies

Hiring diverse staff that represent the communities they serve.



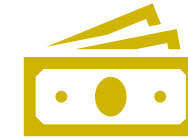
Immigrant and Refugee Health Alliance Scope of Work



Community Collaboration & Innovation



Launch of Coalitions:
Healthcare Language
Access, Regional
Immigrant and Refugee
Coalitions



Community
Transformation; Advancing
Health Equity Grants



Training/Education
Collaborations



Outreach CBO as valued
partner (two-way
partnership/bidirectional
communication)



Regional Symposiums

Cultural Adaptation to Community Needs

Resource Development

Developing resources in response to community and community partner needs.



- ✓ Telehealth and Digital Navigation
- ✓ Working with Interpreters in a Remote Environment
- ✓ ICE/CBP Resources

Quality Projects

Adapting quality projects to meet community needs during challenging times.



- ✓ Apple Health Expansion PIP –Pivot to Telehealth and Digital Navigation.
- ✓ Health Care Education and Navigation

Regional Health Disparities Project

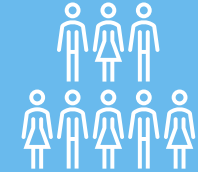
Identifying regional disparities within minority populations with targeted solutions.



- ✓ Community Engagement
- ✓ Learning from community leaders
- ✓ Adapt materials, marketing, and outreach based on feedback

Hope for the Future

Coverage for those who fall through the gap.



- ✓ Developing a plan in partnership with state agencies to address coverage gaps.

CALL TO ACTION!

Form Creative Partnerships



Be Adaptable and Flexible in Your Approach!



Engage and Educate Staff



Empower the Patient/Client to Take Charge of Their Care



Raise Immigrant and Refugee Voices





COMMUNITY HEALTH PLAN
of Washington™

The power of community

Building Toward a Better Tomorrow...

Our Community Partners Show Up!



Our Community Partners Show Up!



Our Community Partners Show Up!



Our Community Partners Show Up!



Our Community Partners Show Up!



Our Community Partners Show Up!



Our Community Health Workers and Promotoras Show Up!



Our CBOs Show Up!



Our CBOs Show Up!



Our Legislators, Elected Council Officials, and Commissions Show Up!



Our Community Shows Up!





COMMUNITY HEALTH PLAN
of Washington™

The power of community

Additional Resources

WAISN Deportation Defense Hotline



COMMUNITY HEALTH PLAN
of Washington™

The power of community

www.waisn.org 1-844-724-3737

About the WAISN Deportation Defense Hotline

The **Washington Immigrant Solidarity Network (WAISN) Deportation Defense Hotline** is the only statewide hotline dedicated to serving all Washingtonians regardless of immigration status. Since 2017, we have been building connections and trust with community members across the state, serving people of every race, ethnicity, embodiment, gender identity, sexuality, nationality, location, language, and culture.

Immigration

- **Rapid Response** to verify reports of immigration enforcement activity by ICE (Immigration & Customs Enforcement) and CPB (Customs & Border Protection): stops, detentions, raids.
- **Know Your Rights (KYR)** information about the rights of all Washingtonians, regardless of immigration status.
- Requests for **legal orientation** for detained persons at the Northwest Detention Center (NWDC).
- Requests for **accompaniment** to immigration court, county court, USCIS appointments, bond hearings, and other locations.
- Application assistance for the **WAISN Fair Fight Bond Fund** for detained individuals in detention centers.
- **Referrals for immigration legal support:** legal aid organizations, free legal clinics, community organizations, and private attorney referrals.

Community Resources

- **Know Your Rights (KYR)** information for workplace, housing, and medical issues.
- Referrals to organizations providing support with **housing, rent, utilities, and public services.**
- Referrals to organizations providing resources for **food, children & babies, and other essential needs.**
- Referrals to healthcare providers and other **health & medical resources**, including health insurance.
- Referrals to **civil legal aid** partners, legal clinics and other organizations for: family law, debt, consumer law, problems with landlords, civil rights violations and criminal charges which may impact immigration status, workplace issues, and more.
- **Working Families Tax Credit** information and application assistance.
- Where to get help with your **ITIN** and free **tax assistance** (during tax season and year-round).
- Referrals to **local immigrant support networks** (WAISN members or partners).



844-724-3737

Monday to Friday: 6am to 6pm

We speak **Spanish and English.**

Interpretation available in nearly 300 languages.



Find **resources** in your area vetted for accessibility to immigrants

1/2025

WASHINGTON IMMIGRANT INFORMATION CENTER

Trusted Information for Immigrant Communities

This program offers verified information to help communities understand their rights and make informed decisions about the safety and well-being of themselves and their families. We offer virtual resources and assistance via chat and phone calls.

Contact us for more information on

- Health Coverage & Care Access
- Know Your Rights
- Policy Updates



Sharing...



Contact Our Team
Weekdays 9-5PM PST
+1 (206) 672-4226
wa-immigrant.info



WAISN Know Your Rights Flyers



COMMUNITY HEALTH PLAN
of Washington™

The power of community

YOUR RIGHTS WITH IMMIGRATION

**IMMIGRATION & CUSTOMS ENFORCEMENT (ICE)
AND CUSTOMS & BORDER PROTECTION (CBP)**

YOU HAVE THE RIGHT NOT TO OPEN THE DOOR



COMMUNICATE THROUGH A WINDOW OR CLOSED DOOR.
ICE AND CBP AGENTS CAN ONLY ENTER YOUR HOME EITHER WITH YOUR CONSENT OR WITH A SEARCH WARRANT ISSUED BY A COURT AND SIGNED BY A JUDGE OR MAGISTRATE. (SEE BACK FOR EXAMPLE.)

YOU HAVE THE RIGHT TO REMAIN SILENT & NOT TO SIGN ANY DOCUMENT



YOU CAN SAY OUT LOUD THAT **YOU WILL NOT ANSWER QUESTIONS OR SIGN A DOCUMENT** WITHOUT AN ATTORNEY PRESENT.

YOU HAVE THE RIGHT NOT TO CONSENT TO A WARRANTLESS SEARCH



YOU HAVE THE RIGHT TO REFUSE THE AGENTS ENTRY TO YOUR HOME. AND **YOU HAVE A RIGHT TO REFUSE WARRANTLESS SEARCHES OF YOUR BODY, YOUR CAR, OR YOUR HOME.**

YOU HAVE THE RIGHT TO TAKE PHOTOS, VIDEOS, & WRITE DOWN DETAILS



YOU CAN INFORM THE AGENT THAT YOU ARE GOING TO USE YOUR RIGHT TO RECORD. (YOU MUST NOT INTERFERE WITH THE AGENTS' DUTIES OR THE SAFETY OF OTHERS.)

REPORT THE ACTIVITY TO THE WAISN DEPORTATION DEFENSE HOTLINE



WAISN HAS RAPID RESPONSE TEAMS THAT CAN BE ACTIVATED TO VERIFY AND DOCUMENT IMMIGRATION ACTIVITY AND OFFER SUPPORT TO THOSE AFFECTED.

STAY CONNECTED



VISIT US AT [WAISN.ORG](https://www.waisn.org)
TO FOLLOW US ON SOCIAL MEDIA & SIGN UP FOR EMAIL UPDATES,
OR SCAN THE QR CODE FOR RESOURCES & INFORMATION.



WASHINGTON IMMIGRANT
**SOLIDARITY
NETWORK**

DEPORTATION DEFENSE HOTLINE

1-844-724-3737

THIS INFORMATION IS FOR EDUCATIONAL PURPOSES ONLY AND DOES NOT CONSTITUTE LEGAL ADVICE.

REVISED 04/2025

Immigrant HR1 NoHLA

Congress Reduces Health Care Access For Many Lawfully Present Immigrants

The federal [One Big Beautiful Bill Act](#) (“OBBBA”) changes eligibility standards for Medicaid, CHIP, Medicare, and the Affordable Care Act (ACA) Marketplace in ways that newly exclude many lawfully present immigrants who have previously received care from these programs.

Only The Following People Will Be Able to Keep or Get Coverage

The following individuals will continue to qualify for health coverage under the new federal restrictions:

- U.S. Citizens including Naturalized Citizens
- Lawful Permanent Residents (Green Card Holders)
- [Individuals with Cuban-Haitian Entrant Status](#)
- [Compact of Free Association \(COFA\) Migrants](#)

This applies to

- Medicaid*
- CHIP*
- Medicare
- ACA Premium Tax Credits

Timeline of Health Coverage Changes for Immigrants

Federal policy changes are already affecting Medicare eligibility for immigrants who would have been newly eligible and will soon impact access to other programs for many immigrants in Washington. The timeline below outlines when these restrictions take effect.

January 1, 2026

All lawfully present immigrants below the poverty line who are ineligible for Medicaid due to immigration status lose premium tax credits.

October 1, 2026

Medicaid and CHIP eligibility federal restrictions go into effect.

*Washington State will continue to cover children under age 19 and pregnant women.

January 1, 2027

Lawfully present Immigrants other than those listed above lose advance premium tax credits for WA Healthplanfinder coverage.

January 4, 2027

Lawfully present Immigrants other than those listed above who were already enrolled in Medicare will lose their eligibility.

NOTE: All Washingtonians to 250% FPL are still eligible for Cascade Care Savings.

Learn about affordable health options on [page 2](#)

Congress is Changing Health Coverage For Many Washingtonians

Medicaid (Apple Health), CHIP, Medicare, and the Affordable Care Act (ACA) Marketplace are changing in ways that exclude many Washingtonians – even if you've received care from these programs in the past. This is a result of the federal [One Big Beautiful Bill Act](#) (OBBBA or HR 1) that was passed by Congress.

Washingtonians can access the following regardless of immigration status:

Free and Reduced Cost Care in Washington

Charity Care at Hospitals

Did you know HALF of all Washingtonians can get free or discounted care at most hospitals?

Fill out an application at the hospital to see if you can get help with:

- Hospital bills
- Copayments
- Deductibles



Drug Discounts

ArrayRx is a state-sponsored prescription drug discount card for Washingtonians. It also provides discounts on over the counter medications without a prescription.



Learn more or enroll:
arrayrxcard.com

Community Health Clinics

You can get medical care at Community Health Clinics (CHCs, also known as federally qualified health centers) and pay on a sliding scale based on your income. WA also has free clinics staffed by volunteers.

Find a free or low cost clinic:
wahealthcareaccessalliance.org

Medical Condition Programs

Washingtonians with cancer, kidney disease and HIV may be eligible for help with costs.

tinyurl.com/med-conditions

Dental Referrals

A free referral service to oral health providers.

DentistLink.org



Cascade Care Savings (CCS)

Washington helps with the cost of monthly health insurance premiums with CCS. WA residents may be able to save up to \$250/month depending on income.

Find out if you qualify:
wahealthplanfinder.org

Family Planning Only

Washingtonians up to 260% FPL can sign up for free access services, including:

- Contraception
- STI screening
- HPV & Hep B vaccination



Get more information or enroll:
1-800-562-3022 ext. 12533

Questions? Talk to a Navigator: 1-855-923-4633

Buyer Beware! Avoid Health Insurance Scams

You may find lower price options that look like health insurance, but they may not cover essential health benefits or include consumer protections.

Learn more: <https://www.insurance.wa.gov>



[Immigrant HR1 NoHLA](#)

DATA PRIVACY AND PUBLIC PROGRAMS

The law prohibits sharing personal information with immigration officials about people who use government-funded health or social services. But under the Trump administration, that information may sometimes be shared with immigration enforcement, even if that's against the law.

Here are 5 things you should know:

- 1** Public programs like Apple Health/Medicaid and Basic Food/Food Assistance Program/SNAP can be very helpful, and **you should balance the benefits with the risks of sharing information.** Only you can decide what's best for your family.
- 2** If the Department of Homeland Security already knows your current address, **applying for benefits does not increase your risk.**
- 3** **We are not aware of added risk in continuing programs if you are already getting services and you have not moved.** Dropping out of vital support programs won't erase the data you have already provided, and keeping Apple Health/Medicaid or Basic Food/Food Assistance Program/SNAP will help your family.
- 4** **You do not have to share everything:** When applying for Apple Health/Medicaid and Basic Food/Food Assistance Program/SNAP, you do not need to share the immigration status or Social Security numbers for family members who are not applying for benefits for themselves, and you should not.
- 5** **The public charge rules have not changed:** Apple Health/Medicaid and Basic Food/Food Assistance Program/SNAP, are not considered in a public charge determination at this time.

This is not legal advice. This information is as of 9 July 2025.

For the more information, please visit nohla.org or nwirp.org

NoHLA NWIRP Data Public Programs 5 Need to Know



COMMUNITY HEALTH PLAN
of Washington™

The power of community

Questions and Answers?