

Healthcare Reentry Services in the Department of Corrections

WASHINGTON BEHAVIORAL HEALTH CONFERENCE

JUNE 12TH, 2026

BEKAH WHITNEY & BROOKE AMYX



Bridging Healthcare Prison to Community

MISSION

Provide comprehensive, specialized healthcare discharge planning and community linkage to individuals releasing from incarceration to support integration and wellness.

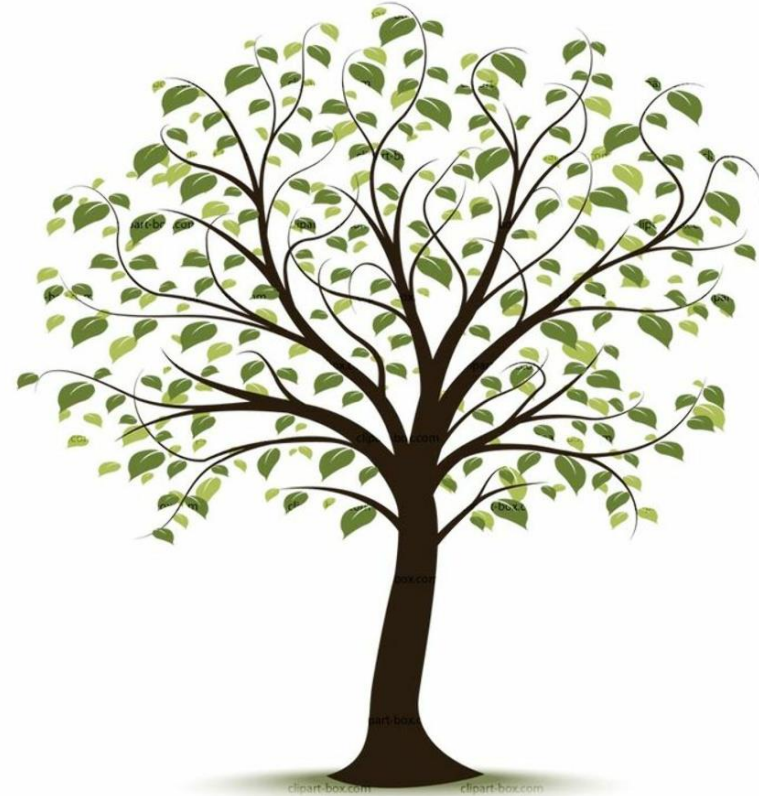


IMPACTS:

- Reduce Recidivism
- Reduce Emergency Services Utilization
- Improve Health Outcomes during reentry
- Save Lives

Outline

- Reentry 2030
- Reentry Executive Order 24-03
- Medicaid Expansion
- Healthcare Reentry Services
 - Prison-based
 - Community-based
- Data/ Resources
- Future State





Washington is the 6th State to sign on to the National Reentry 2030 initiative with a focus on being human-centered, coordinated, and transparent.

- Zero returns to homelessness
- 40 percent of people released from incarceration will be employed six months post-release
- **100 percent of eligible people released from incarceration will be signed up for Medicaid 90 days before release.**

Reentry 2030 [Home](#) - [Reentry2030](#); [WASHINGTON - Reentry2030](#)

Reentry 2030 – the impact

What People Need for Success After Incarceration

How Incarceration Impacts People

7-13
TIMES MORE LIKELY



TO EXPERIENCE
HOMELESSNESS

UP TO **5** TIMES
LESS LIKELY

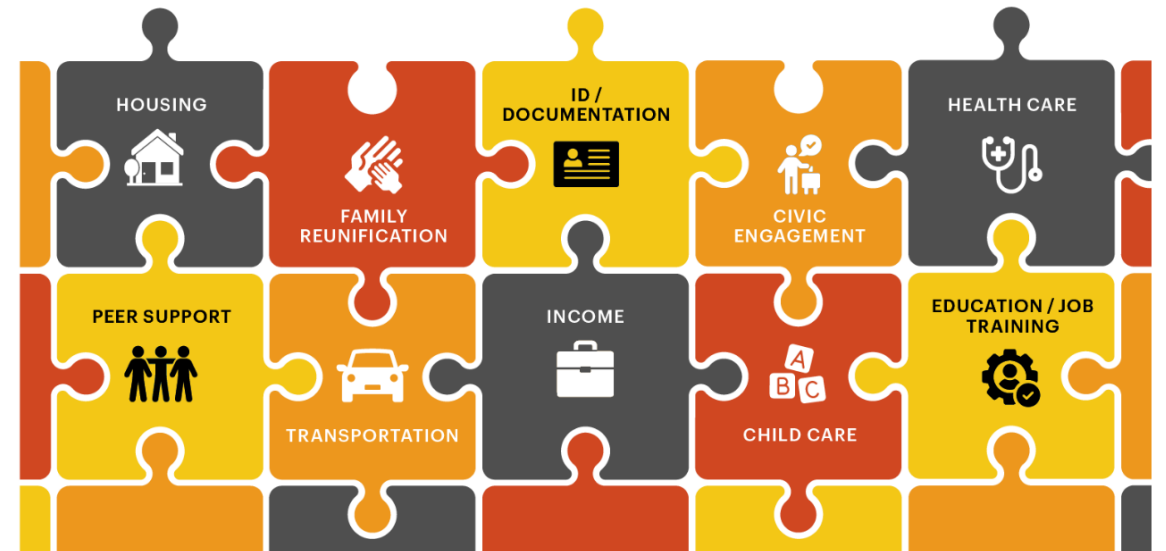


TO RECEIVE
HEALTH TREATMENT

4 TIMES
MORE LIKELY



TO FACE
UNEMPLOYMENT



[Home - Reentry2030](#)

Governor's Executive Order 24-03

Building Safe and Strong Communities through Reentry:

DOC's Reentry Division is leading this effort and partnering on the healthcare components

“WHEREAS, the state of Washington will seek to scale up access to ADA-accessible and affordable housing for all individuals, including people with criminal convictions who need long-term care, behavioral health, medical care, and other supports” Page 1

“Create a comprehensive health care discharge plan for individuals with medical needs, which can assist a community healthcare provider. This discharge plan shall include the person's health history, diagnoses, medications, and any necessary specialty services. Assist with navigation to community health services if needed.” Page 3e

Governor Inslee signed this [Executive Order](#) in September 2024



Medicaid Expansion

- In June 2023, Health Care Authority received approval for Medicaid Transformation Project: Reentry Demonstration Initiative
- July 1st, 2025, Managed Care Organization (MCO) is assigned 90 days to earned release date instead of day of release. Benefits don't turn on until day of release.
- Go live in July 2026, Medicaid benefits are active 90 days prior to release or when identified for transfer to partial confinement.

Reentry Benefits:

- **Case management**
- **Medications for alcohol and opioid use disorder**
- **30-day supply of medications and medical supplies at release**

Video: Second Chance Reentry



<http://docmedia/video/Communications/2026/SecondChanceMonth2026.mp4>

Prison Healthcare Overview



- Initial Health Screenings at Prison Intake
 - SUD Assessment
 - MOUD Screening
 - MH Screening
 - Medical Screening
 - Criminogenic Risk using Washington One (Case Manager)
- Primary Care Follow ups throughout incarceration.
- Utilizing community clinics/hospitals for emergencies and specialty care

Health Services Reentry Services

PRISON

- Facility Health Services Reentry Teams
- Medical Disbursement Unit
- Medicaid Team

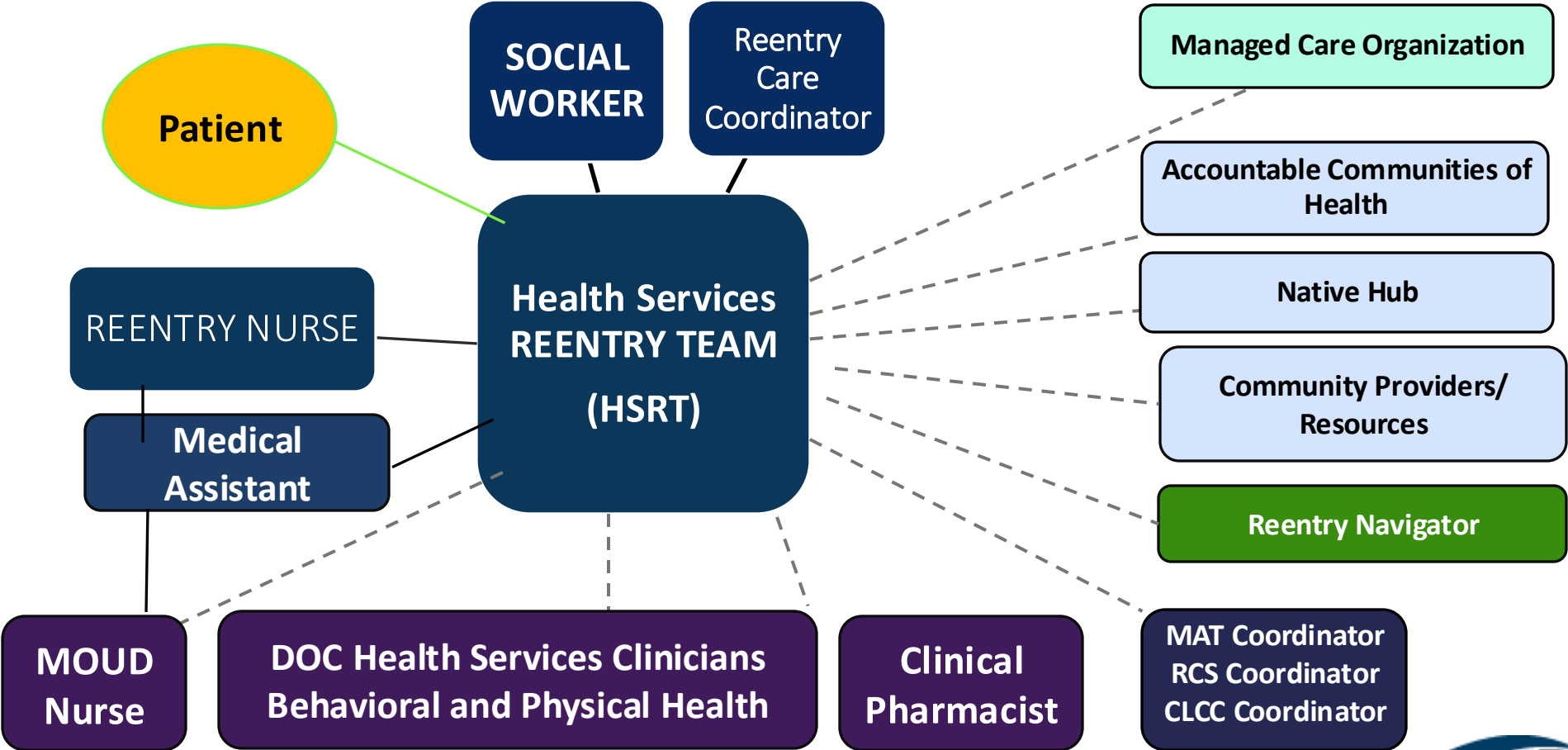
COMMUNITY

- Continuity of Care
- MOUD Coordination
- Reentry Community Services



- **20 Social Workers**
- **7 Reentry Nurses**
- **7 Reentry Care Coordinator**
- **Medical Assistants**
- **MOUD Nurses**

Health Services Reentry Team Model



----- Linkage when indicated
 ——— Core Team Member





Classification Counselor

Health Services: Patient Healthcare

Community Providers

Social Workers/ Reentry Nurses:



Reentry Community Services (RCS) Transition Coordinators

HCA Manages RCS benefits (5yrs)

MAT Coordinators

Medicaid Team

Continuity of Care Team

Reentry Navigators

I-Coach Transition Specialists

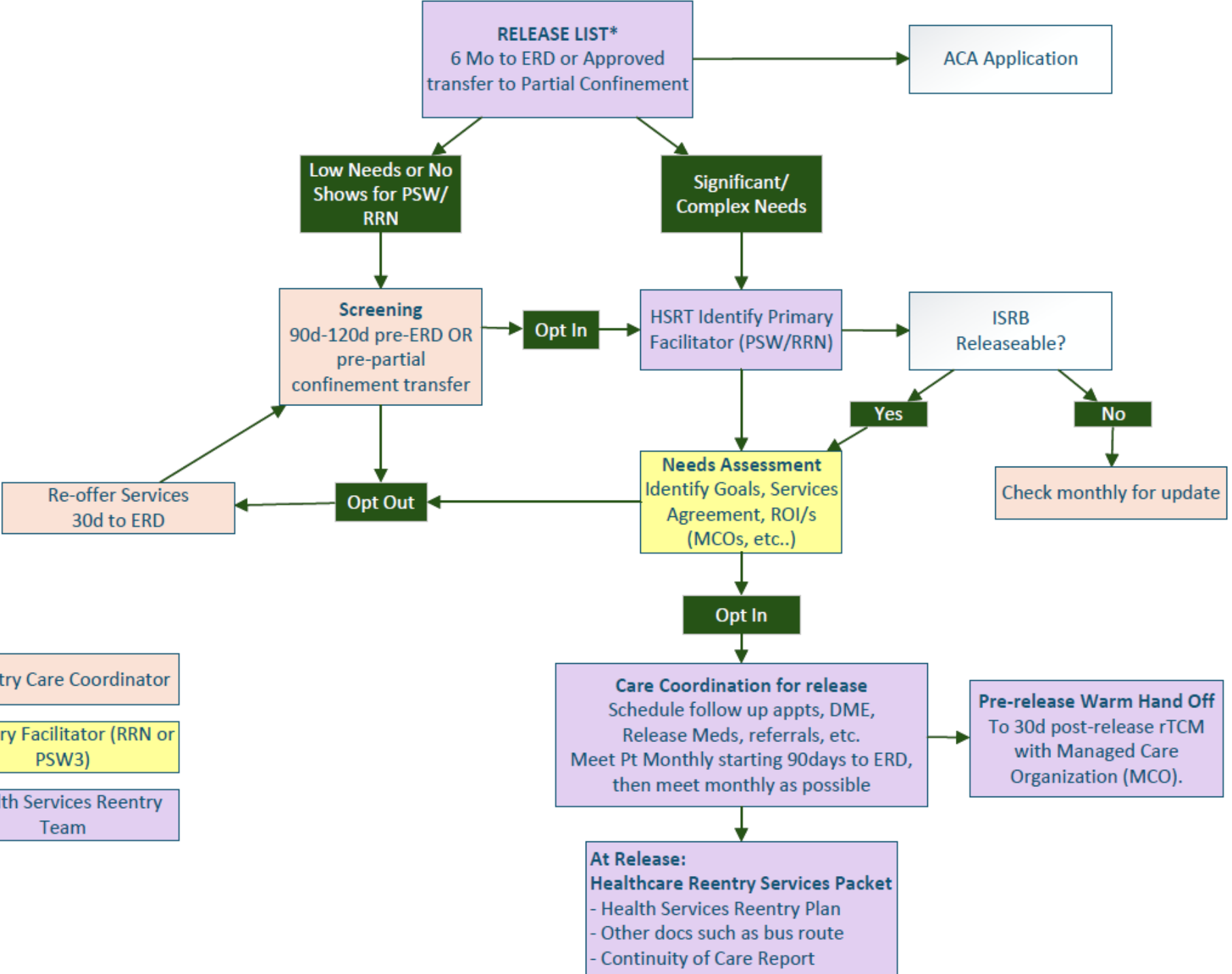
Community Corrections

Managed Care Organization (MCO)

Accountable Communities of Health (ACH)

- DIVISION KEY
- Health Services
- Prisons
- Reentry
- Community Corrections

rTCM Flow Chart



- Reentry Care Coordinator
- Primary Facilitator (RRN or PSW3)
- Health Services Reentry Team



Reentry Targeted Case Management

- Medicaid Transformation Project Service requirements include:
 - Reentry Targeted Case Management- in Prison
 - MOUD
 - Release Medications.
- Reentry Case Management Includes:
 - **Reentry Needs Assessment**
 - **Care Coordination** to set up comprehensive plan for needs identified in Assessment.
 - **Health Services Reentry Plan:** includes next steps for all needs identified.
 - Warm hand off to Managed Care Organization, other services

REENTRY NEEDS ASSESSMENT

DATE Click to enter date	FACILITY Select	UNIT (optional)	PRONOUNS	PREFERRED LANGUAGE
ADMISSION DATE Click to enter date	ERD/PRD Click to enter date	COUNTY OF ORIGIN Click here to enter text.	Do you have any challenges with understanding things in writing:	
Benefits: <input type="checkbox"/> SSI <input type="checkbox"/> SSDI <input type="checkbox"/> TOAP referral <input type="checkbox"/> Veteran <input type="checkbox"/> American Indian/Alaska Native <input type="checkbox"/> Health insurance – Preferred MCO: <input type="checkbox"/> ACA complete or active: <input type="checkbox"/> Short form <input type="checkbox"/> Long form Do you have any questions about your insurance? Are you interested in an MCO warm hand off? Do you have a DPOA for healthcare – or are you in need? Are you interested in Tribal healthcare services? Are you a Veteran/have DD214/VA benefits:				
Physical Health: Current health concerns or chronic medical conditions: DME: Interested in primary care after release: Current pre- or post-release consults: Concerns related to medical care/follow up appointments/specialty care: Do you have a current HSR, if yes, explain: If eligible for DDCCS, patient is <input type="checkbox"/> declining <input type="checkbox"/> amenable to services. If amenable, DDCCS collaboration is underway: <input type="checkbox"/> Yes <input type="checkbox"/> No If eligible for CCA: <input type="checkbox"/> Required exam completed <input type="checkbox"/> Required exam referred/pending If CLCC, have you been working with your case manager on a care plan at release? <input type="checkbox"/> Yes <input type="checkbox"/> No If GAC, what are your treatment goals and barriers to achieving goals? Are you prescribed hormones? <input type="checkbox"/> Yes <input type="checkbox"/> No Have you had a psychological evaluation? <input type="checkbox"/> Yes <input type="checkbox"/> No Have you been scheduled for surgery? <input type="checkbox"/> Yes <input type="checkbox"/> No				
Dental: Do you have current dental conditions/concerns? Interested in dental care after release/have a current provider: What are your needs or concerns related to dental:				
Mental Health Services: <input type="checkbox"/> RCS <input type="checkbox"/> Current involuntary antipsychotic order Diagnosis: History of MH care: Are you interested in follow-up mental health care or do you have a community provider? RCS referral appropriate/completed? Is patient interested in PACT or Path?				
Substance Use Services: Patient is interested in: <input type="checkbox"/> MAT/MOUD: <input type="checkbox"/> Pre-release <input type="checkbox"/> Post-release <input type="checkbox"/> Narcan requested <input type="checkbox"/> SUD treatment referral post-release				
MOUD/MAUD summary: History of SUD Care: Treatment completed while incarcerated: Summary: Interested in recovery support groups or recover focused peer support: Release Medications: <input type="checkbox"/> Yes <input type="checkbox"/> No What is your plan for managing your medications after release? Medication list: Will any of your medications require refrigeration? DOC Housing Plan: Housing identified: <input type="checkbox"/> Yes <input type="checkbox"/> No Plan for housing/intent to use voucher? Special considerations for housing: Have you thought about adult family home or is there a need for residential care or caregiving of any kind? Partial Confinement: Are you planning to transfer for partial confinement? If yes, is the plan for GRE/electronic home monitoring, ABHS, or Reentry Center? SOTAP: <input type="checkbox"/> N/A <input type="checkbox"/> Current sex offense <input type="checkbox"/> Treatment while in custody <input type="checkbox"/> Treatment needs in community				
DOC Community Supervision: Will you have Community Supervision? Are you interested in meeting with your COO prior to release? Basic Needs: <input type="checkbox"/> Food <input type="checkbox"/> Clothing <input type="checkbox"/> Transportation How do you plan to meet your needs after release? Do you know how to navigate the bus system? Do you need a referral for Medicaid transportation? What challenges might you face after release? Support: Who is in your support system? Are you interested in additional support referrals, ACH? Are you interested in formal Peer support referrals? Do you have vocational or education goals after release?				
Mini Mental Status Examination: Oriented: Thought Process: Observable Symptoms: Appearance/Behavior/Insight: Stage of Change:				

State law and/or federal regulations prohibit disclosure of this information without the specific written consent of the person to whom it pertains, or as otherwise permitted by law.

State law and/or federal regulations prohibit disclosure of this information without the specific written consent of the person to whom it pertains, or as otherwise permitted by law.

REENTRY NEEDS ASSESSMENT

DATE Click to enter date	FACILITY Select	UNIT (optional)	PRONOUNS	PREFERRED LANGUAGE
Personal Strengths: What has helped you be successful in the past? Clinical summary:				
Individual's Identified Goals/Plan:				
What ROIs have been completed: <input type="checkbox"/> MCO: <input type="checkbox"/> COO: <input type="checkbox"/> Reentry Navigator: <input type="checkbox"/> Community Provider: <input type="checkbox"/> Family: <input type="checkbox"/> Others:				
Primary Facilitator Notes: Meet for case management on: Primary facilitator to make referrals for:				
COMPLETED BY (typed name) Click here to enter text.			SIGNATURE	

State law and/or federal regulations prohibit disclosure of this information without the specific written consent of the person to whom it pertains, or as otherwise permitted by law.

Case Management Pre-release Tasks

- Comprehensive Healthcare Linkage:
 - Mental Health
 - Substance Use Disorder
 - Physical Health
 - Schedules Appointments post-release
 - Facilitate data sharing
- Benefits:
 - Health Insurance
 - Expedited DSHS Cash Assistance for High Needs
- Healthcare Decision Maker Identification
- Systems Navigation
 - Developmental Disabilities Administration
 - Long Term Care: Adult Family Homes, Nursing Home Coordination with DSHS
 - Health Care Authority: Health Insurance
- Provider to Provider handoff
- Release Medications
- Medical Equipment (e.g. wheelchairs)
- Partner closely with specialized units



HEALTH SERVICES REENTRY PLAN

Print release order Click here to enter text.	DOC number Click to enter it.	Release date Click to enter date.
<p>Print release order Click here to enter text.</p>		
PROVIDER	PROVIDER PHONE NUMBER	
PROVIDER FAX	PROVIDER ADDRESS	
EMERGENCY PHONE NUMBERS		
<p>988 Lifeline – Call during a crisis or when in need of support. Translation services are available for over 240 languages. Veteran's Crisis Line: Call 988 then press 1 or text 988255 Idioms Español: Llame al 988 y luego presione 2 LGBTQI Crisis Line: Call 988 then press 3 or text PRIDE (77433) American Indian and Alaska Native: Call 988 then press 4 Crisis Counselor: Text HOME to 741741 Nicotine Cessation/Quitting Support Service: Call 1-800-754-8686 or text READY to 203800 Washington Recovery Helpline (24/7): 1-866-789-1211 (mental health, gambling, substance abuse) Community Resource Needs in your area: Call 211 Other:</p>		
HEALTH INSURANCE		
Print release order Click here to enter text.	PROVIDER NUMBER	
PROVIDER ADDRESS	PROVIDER PHONE NUMBER	
Additional Information: Call Health Care Authority (HCA) for same-day access or if having issues at 1-800-520-0822.		
PHYSICAL HEALTH		
PROVIDER (Last, First, Middle Initial)	PROVIDER NUMBER	
PROVIDER FAX	PROVIDER ADDRESS	
Additional Information:		
MENTAL HEALTH		



HEALTH SERVICES REENTRY PLAN

Print release order Click here to enter text.	DOC number Click to enter it.	Release date Click to enter date.
<p>Print release order Click here to enter text.</p>		
PROVIDER	PROVIDER NUMBER	
PROVIDER FAX	PROVIDER ADDRESS	
Additional Information:		
Warning signs and symptoms I should reach out to my provider for support:		
SUBSTANCE USE DISORDER		
PROVIDER (Last, First, Middle Initial)	PROVIDER NUMBER	
Additional Information: Relapsed on Medication Assisted Treatment: Choose an item.		
BENEFITS/COMMUNITY RESOURCES		
<p>DSIS: The Community Services Office (CSO) may provide food assistance, cash assistance, housing and essential needs (H&EN), and other benefits, if eligible. To apply by phone call 1-877-801-0233. For same-day service the closest CSO to your housing is at: Additional information: Social Security Administration (SSA): Call 1-800-772-1213 to schedule an appointment or access online at: www.ssa.gov. SSA hours are Monday to Friday, 8:00 am to 7:00 pm. The closest SSA office to your housing is: DDA Contact: Accountable Community of Health: Tribal Resource Hub: 662-891-9660 Sex Offender Treatment: Continuity of care information: Vocational: Education: Financial Literacy: ADA Accommodation Information: Washington Talking Book & Braille Library (WTTBL): 206-615-0400 Department of Services for the Blind (DSB): 800-522-7193 https://dsh.wa.gov/learn-about-our-services/#equal-more-information Office of the Deaf & Hard of Hearing (ODHH): 360-329-7882, Voice 800-422-7630</p>		



HEALTH SERVICES REENTRY PLAN

Print release order Click here to enter text.	DOC number Click to enter it.	Release date Click to enter date.
<p>Print release order Click here to enter text.</p>		
CRIMINAL JUSTICE		
TRANSPORTATION		
Day of release: After release (If applicable):		
DOC approval or flag Click here to enter text.	DOC approval date	DOC approval date Click to enter date.
DOC approval or flag (preparing transportation) Click here to enter text.	DOC approval date	DOC approval date Click to enter date.
Destination: CPDRI – Health Pass 4 CDPI – Federal		

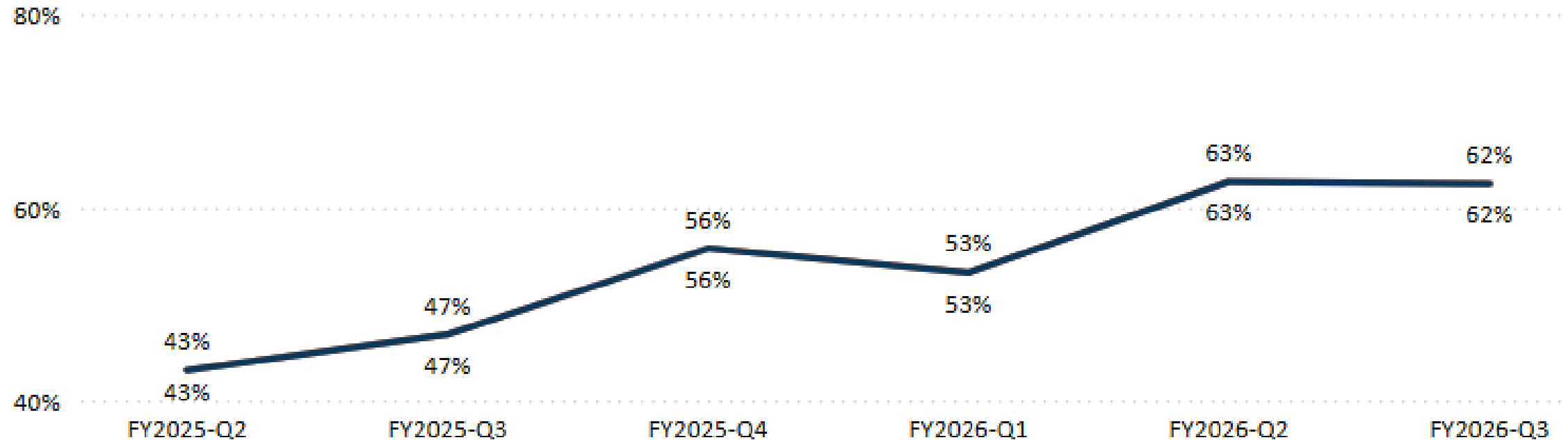
Continuity of Care Report for individual is attached when provided to patient. Other resource information, bus routes, etc. is also attached in healthcare release packet.



Health Services Reentry Team Contacts

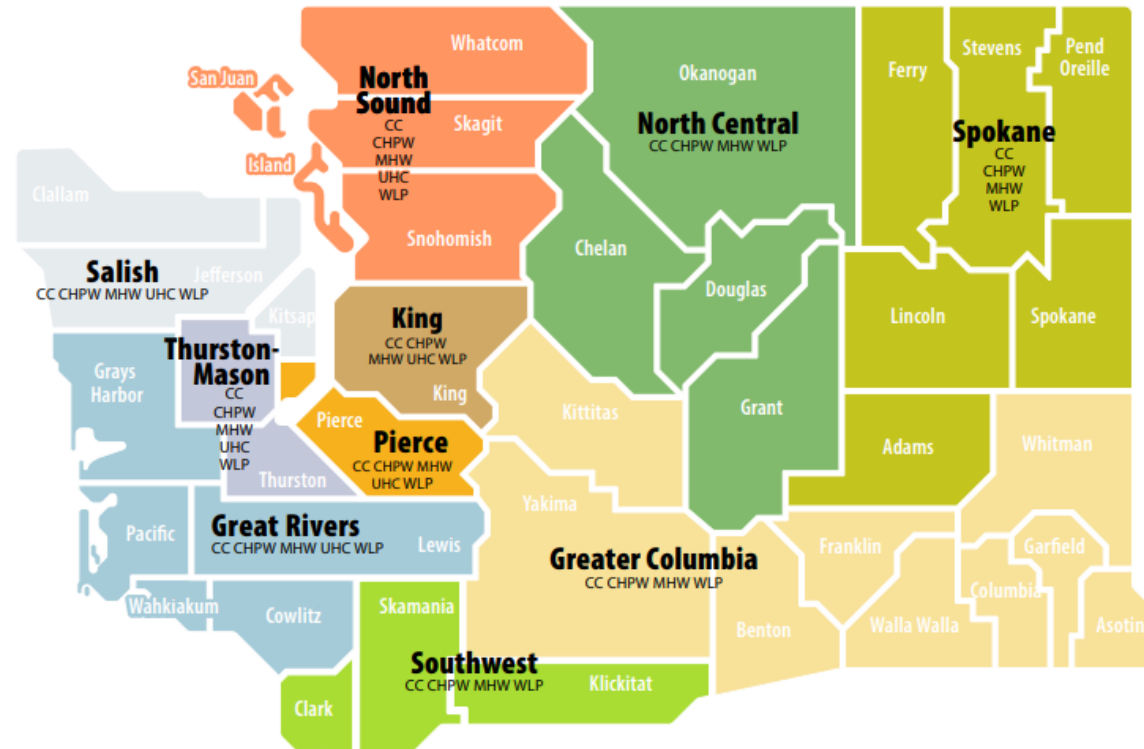
Facility	Distribution List	Social Work Supervisor
AHCC	docdlahcchsreentry@doc1.wa.gov	Michael Bothun
CCCC	docdlcccchsreentry@doc1.wa.gov	Denette Wagner
CBCC	docdlcbcchsreentry@doc1.wa.gov	Rebekah Whitney
CRCC	docdlcrcchsreentry@doc1.wa.gov	Michael Bothun
MCC	docdlmcchsreentry@doc1.wa.gov	Rebekah Whitney
OCC	docdlccrhseentry@doc1.wa.gov	Rebekah Whitney
SCCC	docdlscchsreentry@doc1.wa.gov	Denette Wagner
WCC	docdlwcchsreentry@doc1.wa.gov	Denette Wagner
WCCW	docdlwccwsreentry@doc1.wa.gov	Denette Wagner
WSP	docdlwsphsreentry@doc1.wa.gov	Michael Bothun

Healthcare Reentry Planning Services



Percentage of individuals released or transferred to partial confinement with at least one encounter for healthcare reentry planning

MCO Warm Hand Off



CC – Coordinated Care
 CHPW – Community Health Plan of Washington
 MHW – Molina Healthcare of Washington
 UHC – UnitedHealthcare Community Plan of Washington
 WLP – Wellpoint Washington (previously Amerigroup)

- Requirement of 1115 Medicaid Transformation Project Waiver.
- Means direct connection (phone or virtual meeting) between MCO and primary facilitator or designee – including the patient when appropriate.
- MCOs provide reentry case management post-release for 30 days.
- MCOs may be different based on region of release: [Apple Health Service Area Map](#)
- Telehealth may support

Health-Related Social Needs



Accountable Communities of Health (ACH) provide:

- Community Health Hub
- Community Health Workers
- Health Related Social Needs (Address unmet, adverse social conditions that contribute to poor health).

ACH Regions Map



- ACHs are unique but share an approach to improving community health and transforming health care delivery.
- ACHs can link pre-release when indicated
- Health Related Social Needs linkages are a required component of rTCM

[Coalition of ACHs | health | Washington, USA](#)

[Accountable Communities of Health \(ACHs\) | Washington State Health Care Authority](#)

Unite Us Platform Launched by Community Corrections

- Cloud-based platform for sharing resources and tracking referrals.
- Kendle Stice is contact for grant funded program

Community-based support for all



[Find social care resources - Washington Department of Corrections by Unite Us](#)

Reentry Division Programs

- [Correctional Industries Fact Sheet](#)
- [DOC Education Fact Sheet](#)
- [Reentry Housing Assistance Program Brochure](#)
- [Reentry Centers Fact Sheet](#)
- [Reentry Systems Fact Sheet](#)
- [Strength in Families Fact Sheet](#)



Medicaid Team

- 98% of eligible individuals have a medicaid application processed pre-release
- 95% of releases have Medicaid eligibility
- New Staff to prepare for 1115 Medicaid Transformation Project go live on July 1st: benefits are active 90 days to release date.
- Ensures all incarcerated individuals have a stronger start at release with medical benefits and without unpaid medical bills.



Continuity of Care Team

- Provide Data to Managed Care Organizations for all eligible releasing individuals
- Provided support when individuals have medication, insurance or other healthcare issues post-release.
- Relies on partnership with HCA

Email for DOC questions within 90d of prison to community transition:
docdlaskhsreentry@doc1.wa.gov

Opioid Response Unit



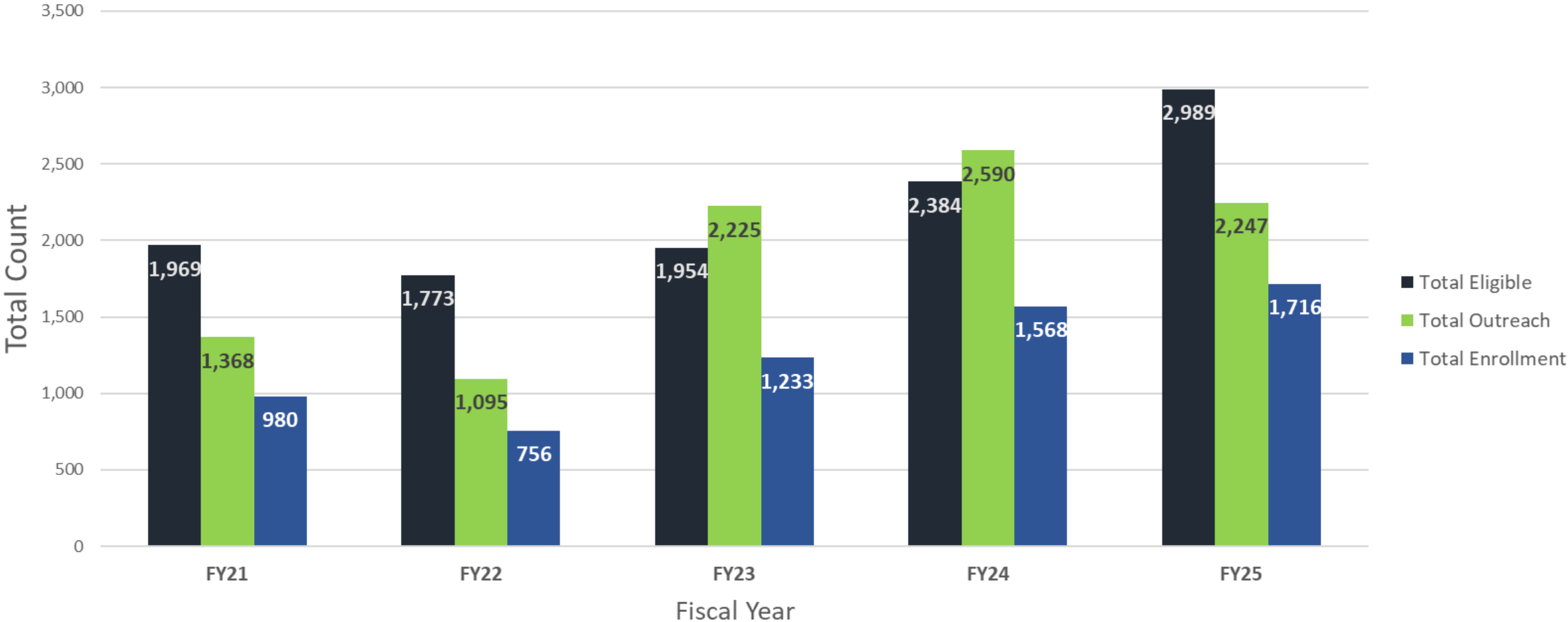
Elements Services provided:

- Referrals to community providers to continue medication for addiction treatment or to start medication after release
- Post-release follow up to confirm linkage
- Naloxone Kit when released along with education on how to administer
- Fentanyl education fliers

Identification of those with OUD:

- Opioid Screening at intake
- Data review for individuals within 6 months of release
- Referrals from facility staff
- Self-referrals

SOR Grant Eligibility, Outreach, & Enrollment FY21 -FY25



Eligibility = The number of releasing individuals who have been identified with an OUD diagnosis

Outreach = The number of individuals who were contacted by a reentry care navigator

Enrollment = The number of individuals who accepted our services and decided to participate in the MOUD program in some form (next slide shows this breakdown)

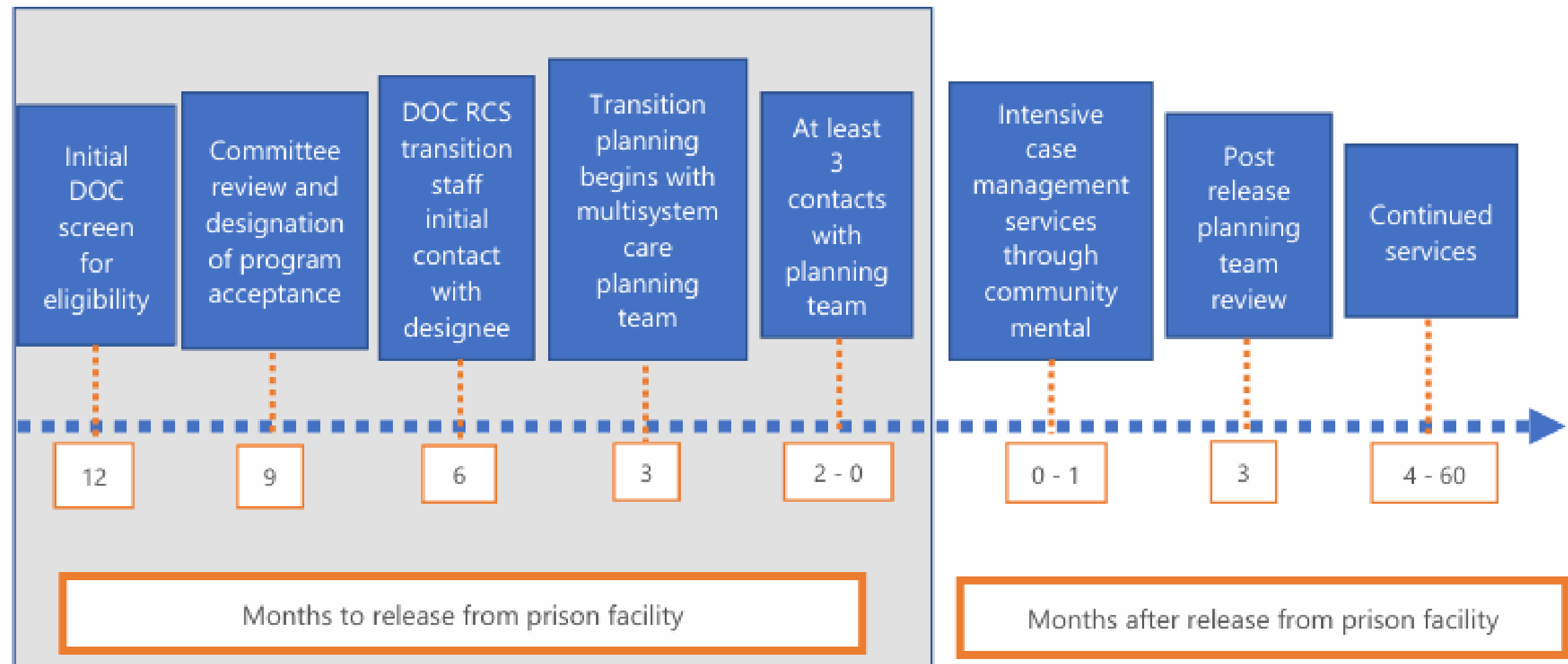
Reentry Community Services (RCS)

COMMUNITY

Multidisciplinary transition planning for individuals with mental health disorder and risk to self or others. Includes in-reach while in prison and support post release to ensure linkage to community mental health.

- Pre-Release Transition Services
 - Multisystem Care Planning team
- 30-Day Intensive Services Period
- On-Going Services for up to 60 months in the community

Reentry Community Services Program Overview



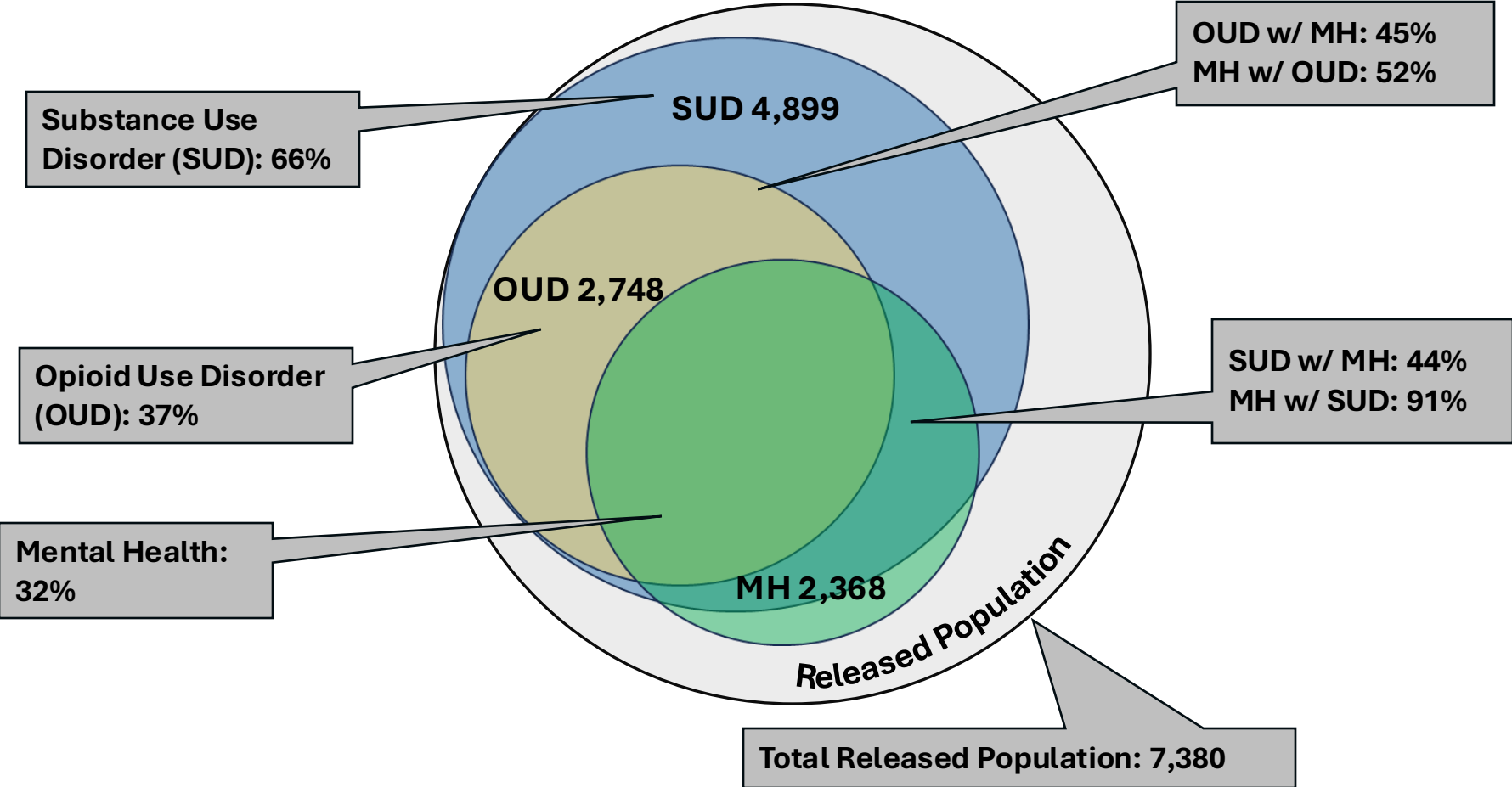
Reentry Community Services (RCS)

COMMUNITY

Multidisciplinary transition planning for individuals with mental health disorder and risk to self or others.

- Close partnership with Health Care Authority, that has contracts with community Behavioral Health Providers for specialize services and supports post-release.
- Housing funds have not changed since program inception, legislative requests unsuccessful.
- Evidence based approach for increasing mental health provider engagement and increasing housing stability for this population.

Prevalence of Behavioral Health Disorders in Released Population* FY25



*Releasing Population includes all prison releases and transfers to partial confinement to include people incarviolations

Post Incarceration Syndrome (PICS)

- Institutionalized personality traits
- Post traumatic strses symptoms
- Social Disconnection and Alienation
- Temporal Disorientation
- Substance Use Vulnerability
- Identity Struggles



[The Life After Prison - Reentry Programs, Post Incarceration Syndrome, Institutionalized Personality Traits](#)

SAMHSA Best Practices for Reentry

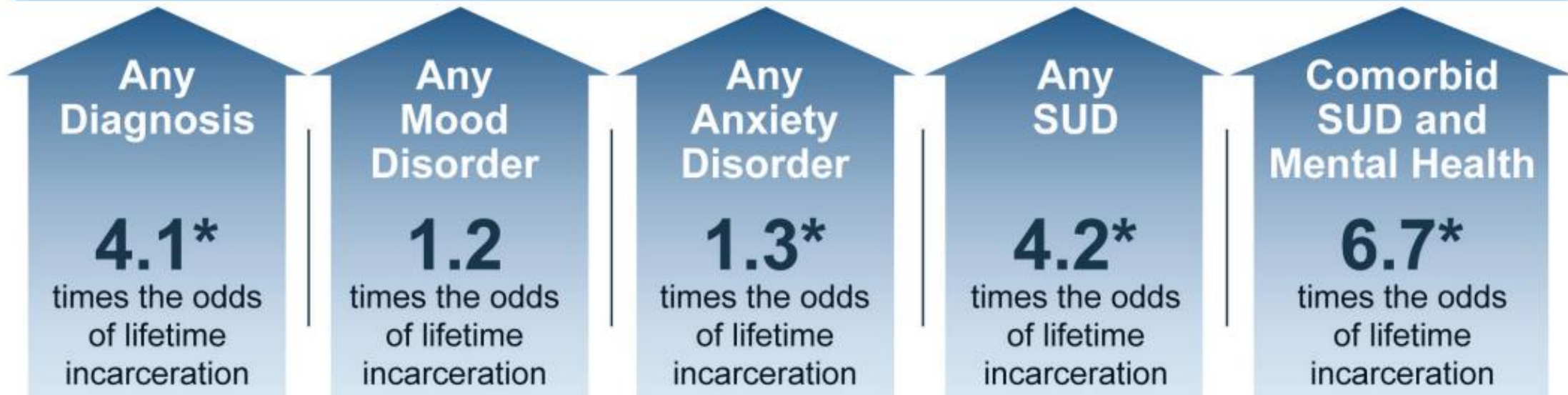
A systematic review of the literature identified three interventions that demonstrated a strong evidence base of effectiveness for individuals with mental health conditions and/or substance use disorders reentering the community from jail or prison

1. MOUD
2. Case Management
3. Peer and Patient Navigation

[2 page Overview of SAMHSA's evidence based resource guide](#)

Impact on Odds of Lifetime Incarceration

Association of Lifetime Mental Health Conditions and SUDs With Lifetime Incarceration;
Odds Ratios Adjusted for Sociodemographic and Other Disorders



*p \leq .001

Source: Moore, K. E., Oberleitner, L. M., Zonana, H. V., Buchanan, A. W., Pittman, B. P., Verplaetse, T. L., Angarita, G.A., Roberts, W., McKee, S. A. (2019). Psychiatric disorders and crime in the US population: Results from the National Epidemiologic Survey on Alcohol and Related Conditions Wave III. *The Journal of Clinical Psychiatry*, 80(2), 15899. <https://doi.org/10.4088/JCP.18m12317>

SAMHSA August 2023 Best Practices for Reentry...

<https://store.samhsa.gov/sites/default/files/pep23-06-06-002.pdf>

Future

Prison based teams provide healthcare reentry services to everyone who needs it

Every individual releasing who is interested has opportunity to meet with certified peer support specialist prior to release.

Medicaid reimbursement for prison based services.

Comprehensive network of providers and resources reduced barriers to access to care.





Resources for Reentry

- Health and Reentry Project [Homepage | Health and Reentry Project](#)
- [Transitions Clinic](#)
- [Data Analytics | Washington State Department of Corrections](#)
- Community Partnership for Transition Solutions
 - **King County**
 - **Kitsap County**
 - **Lewis County**
 - **North Central**
 - **Pierce County**
 - **Skagit-Island County**
 - **Snohomish County**
 - [Spokane County](#)
 - **Thurston County**
 - **Whatcom County**

Contact

Bekah Whitney LICSW, SUDP

Psychiatric Social Worker 4

Washington State Department of Corrections

425-327-9296

rlwhitney@doc1.wa.gov

Brooke Amyx LICSW, SUDP

Health Services Reentry Administrator

Washington State Department of Corrections

360-701-4127

Brooke.amyx@doc1.wa.gov



References

[Building better neighbors and improving public safety: New executive order updates Washington's recidivism and reentry efforts | Governor Jay Inslee](#)

[Executive Order 24-03 - Reentry 0.pdf \(wa.gov\)](#)

[Homepage | Health and Reentry Project](#)

[The Life After Prison - Reentry Programs, Post Incarceration Syndrome, Institutionalized Personality Traits](#)

[Reentry 2030 Home - Reentry2030; WASHINGTON - Reentry2030](#)

Substance Abuse and Mental Health Services Administration. [Best Practices for Successful Reentry From Criminal Justice Settings for People Living With Mental Health Conditions and/or Substance Use Disorders \(samhsa.gov\)](#). August 2023.

Substance Abuse and Mental Health Services Administration. Guidelines for Successful Transition of People with Mental or Substance Use Disorders from Jail and Prison: Implementation Guide. (SMA)-16-4998. Rockville, MD: Substance Abuse and Mental Health Services Administration, 2017. [PDF](#)

Weisen, Nicole. Post-Incarceration Syndrome (PICS): A public health and trauma informed framework for understanding the invisible impact of incarceration. White Paper, electronic download June 2026.